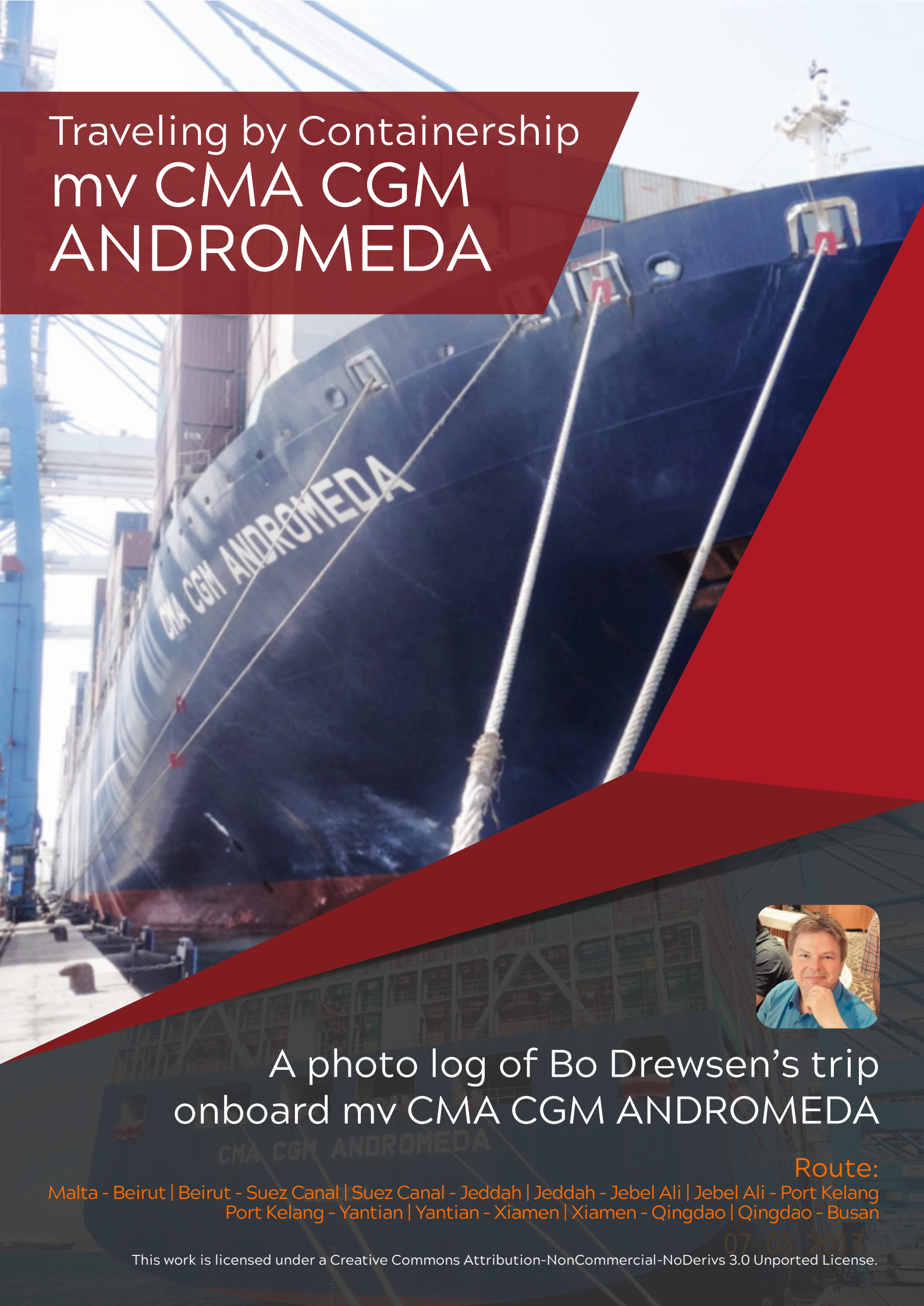


# Traveling by Containership mv CMA CGM ANDROMEDA



A photo log of Bo Drewsen's trip  
onboard mv CMA CGM ANDROMEDA

**Route:**  
Malta - Beirut | Beirut - Suez Canal | Suez Canal - Jeddah | Jeddah - Jebel Ali | Jebel Ali - Port Kelang  
Port Kelang - Yantian | Yantian - Xiamen | Xiamen - Qingdao | Qingdao - Busan

07.03.2017

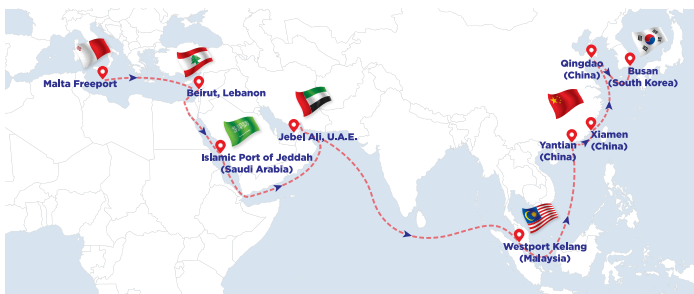
This work is licensed under a Creative Commons Attribution-NonCommercial-NoDerivs 3.0 Unported License.



The vessel I am traveling as passenger on – mv CMA CGM Andromeda.



The aft of mv CMA CGM Andromeda with towering stacks of containers.



Map of the ship's route that I took, I boarded in Malta and will disembark in Busan.



Onboard the CMA CGM Andromeda together with captain MITROVIC (right) and chief engineer LUCIN. A most competent and friendly team onboard!

Dear Readers of PCW,

The month of July has passed and I hope you have enjoyed the month even without your usual weekly issue of PCW. This special edition of Project Cargo Weekly is focusing on travel shipping and the trip I have taken onboard CMA CGM Andromeda from Malta to Busan. First of all I wish to dedicate this issue to the sailors of the world who are the ones keeping the supply chain running and the stores full of the much coveted products that we seem to want endlessly.

When I decided to take a containership as passenger with my daughter from Europe to Asia it was not something that came out of the blue. In fact I have travelled this way each year since 2005. This is the 2nd time that my daughter has joined me on a container ship, so she was well aware that internet would not be available onboard. We have spent quality time together and we improved our table tennis skills. We have both read a lot of books and also gone ashore to meet contacts/friends and do the occasional shopping (mainly in the endless malls of Dubai).

You may ask why I travel by containership when there are cruise ships available and you may wonder how one passes the time onboard. From my current and previous trips I have found the following benefits:

- Total tranquility onboard for you as a passenger on a “working” ship
- There is ample peace and quiet to read books and no one bothers you
- You have time to reflect on decisions already made and carefully plan for the future. Somehow looking at the ocean in the daytime and stars at night opens your mind completely
- You have time to remember what is important in life and what really means something
- You can avoid news, most of which is negative and copy / paste anyhow

The route I chose for this trip included a few ports where I have never been before such as Beirut, Jeddah and Jebel Ali. In all 3 ports I made new contacts in shipping, met with local agents and come to think of it, if I had visited them in the “conventional way with flights and hotel” the cost and time would have been almost the same, but the stress would have been much more.

So for a shipping man like the undersigned it is indeed the way to travel and, the ideal way to combine business with pleasure.

The vessel CMA CGM ANDROMEDA has 5 luxurious cabins on the F deck dedicated to passengers along with a passengers recreation room. On C deck there is a gym and a small indoor pool which is filled daily with saltwater. Kudos indeed to CMA CGM as a shipowner to offer such a product in today's market. Most shipowners do not accept passengers. It is not necessarily a cheap way to travel but the cost is reasonable at eur 110/euro/per day/person including all meals. If you would like to know more about the routes that are available around the world then I welcome you to approach Ms. Marie Paule Aubert of Ponant, partner of CMA CGM direct. Her email address is: [mpaubert@ponant.com](mailto:mpaubert@ponant.com)

So, without boring you further I will allow the photos below to do the “talking” in this issue of Project Cargo Weekly.



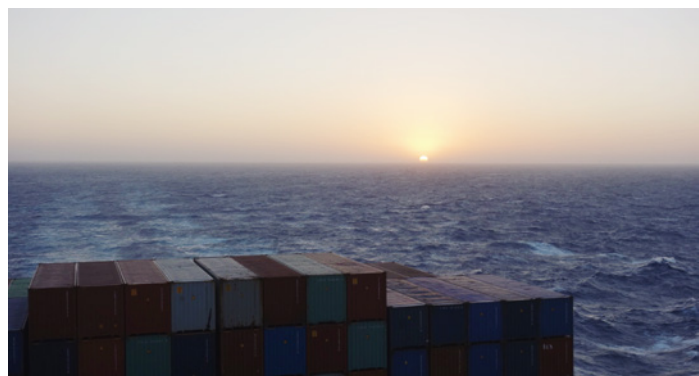
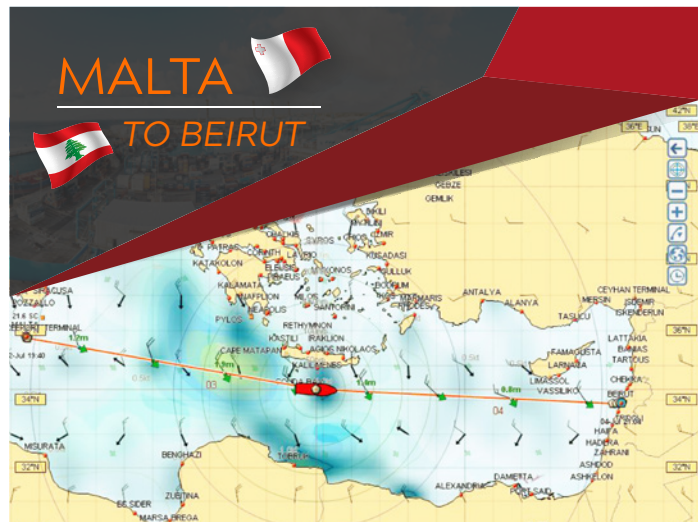
Next week (on August 10th) the normal newsletter is back in town with interviews, sector news, industry news and so on – and until then I remain,

Yours sincerely,

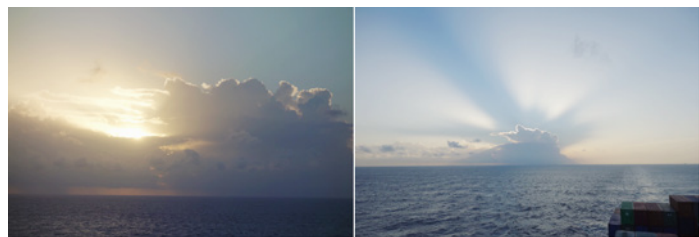
Bo H. Drewsen

Editor, Project Cargo Weekly

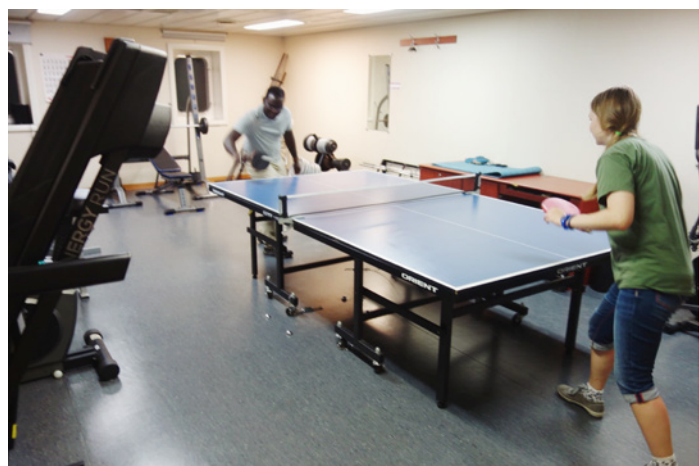
Currently onboard mv CMA CGM Andromeda close to Busan, South Korea



First sunset onboard after leaving Malta.



Splendid scenery on the horizon.



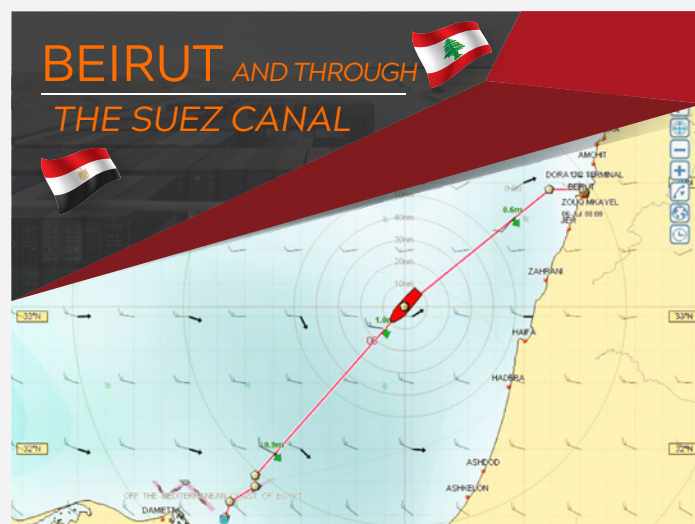
Sports onboard.



Arrival in Beirut.



Alongside in Beirut.



Lunch ashore with Mr. Maroun El Khoury of CMA CGM Lebanon on the Beirut marina.

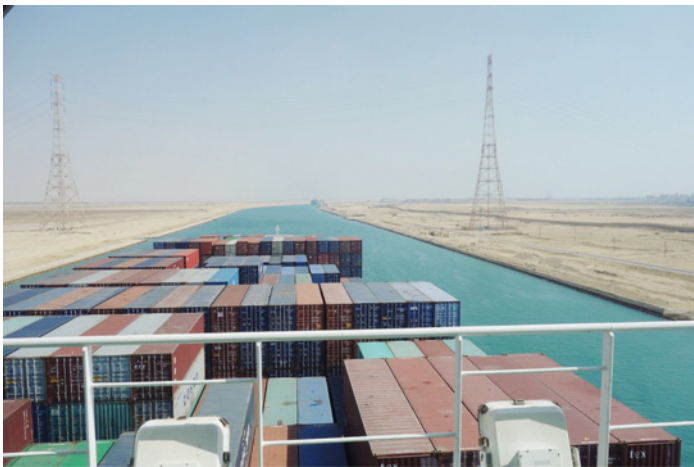




Entrance to the Suez Canal with Port Said Container Terminal on the port side of the vessel.



Another container vessel heading northbound in the new Suez Canal whilst we were heading Southbound.



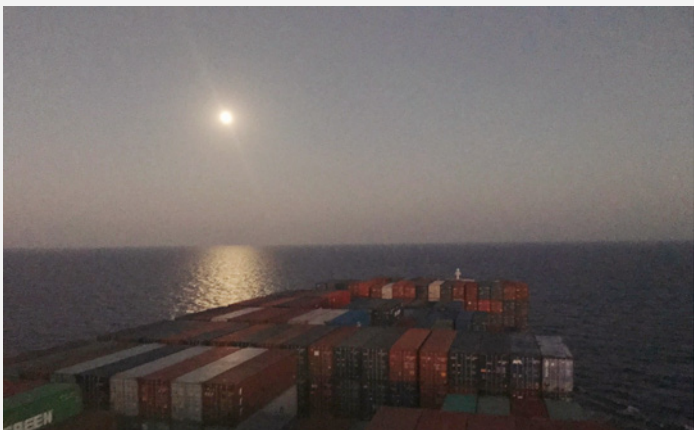
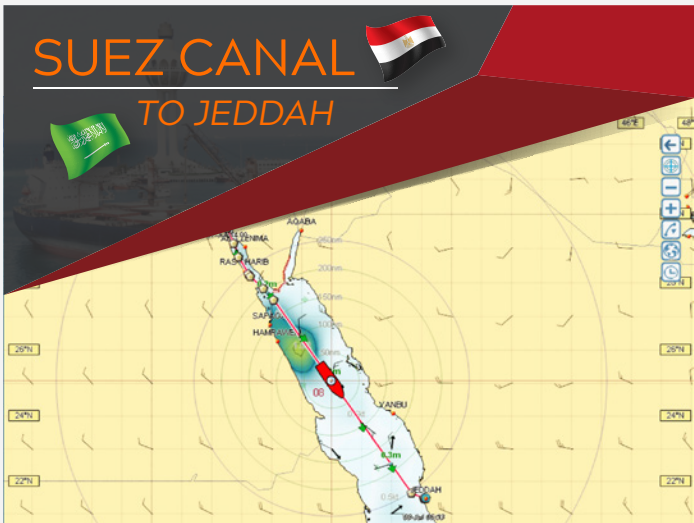
Sailing in the desert about midway in the 15 hr long journey in the Suez Canal.



Exiting the Suez Canal at Ismailiya with a jack-up rig on our starboard side before entering the Red Sea.



Exiting the Suez Canal at Ismailiya with the great mosque on our starboard side before entering the Red Sea.

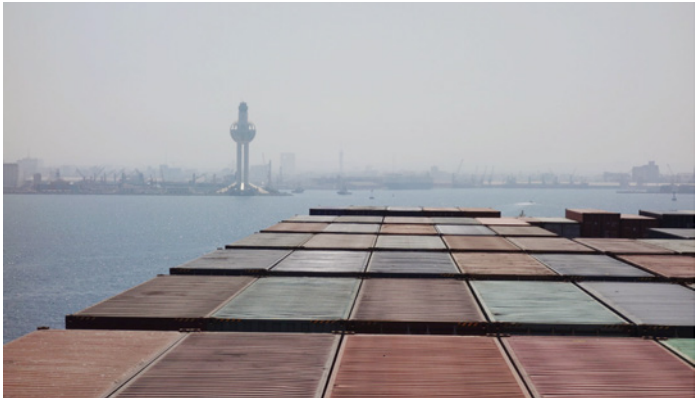


Heading south in the Red Sea with an incredibly clear moon ahead of us.



On the Red Sea.





Entering the Islamic port of Jeddah, Saudi Arabia – careful navigation needed.



Jeddah Port Control Tower



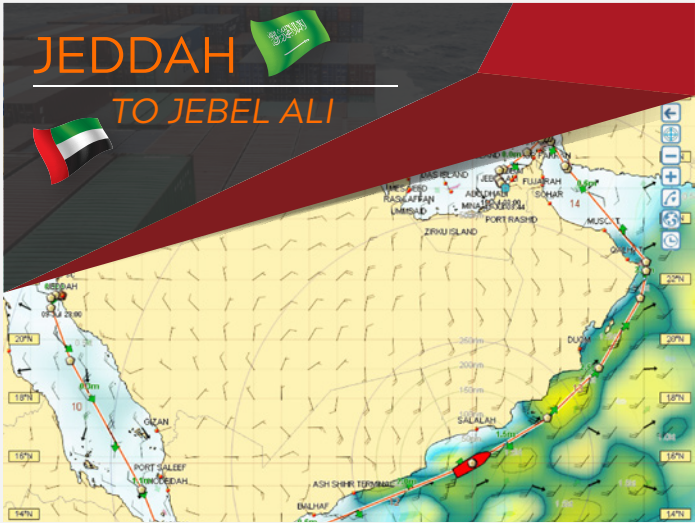
Entering into the port of Jeddah very close to the bulk terminal with a bunch of tanks ready for either dispatch or inland transport, a bulk carrier – and the berth for our 363m long vessel.



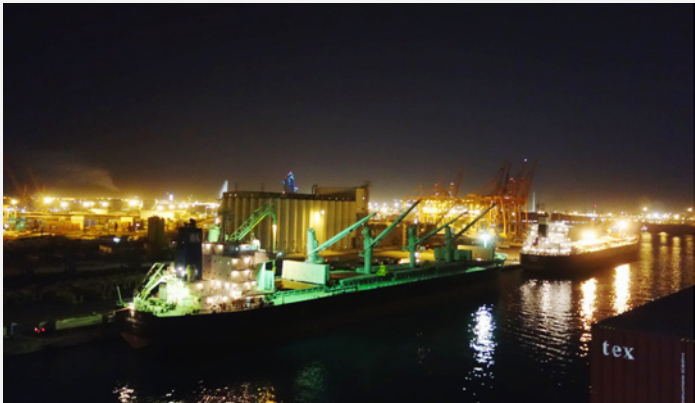
A bulk vessel at the port of Jeddah.



Meeting onboard with CMA CGM Jeddah office. Present from left to right: Mr. Muhammad A. AlGhamdi, Mr. Bo H. Drewsen, Mr. Muhammad Asif.



Leaving Jeddah at 0100am with some spectacular lights of the port in the still 36 degree heat at that time.



Glowing lights from the port and the ships alongside.





Grilling fish on deck, our dining table, the 4 passengers onboard Mr. Piccinino from Malta, Ms Drewsen from Finland, Mr. Bailey Castro from USA and Mr.Drewsen from Denmark, dessert today after main.



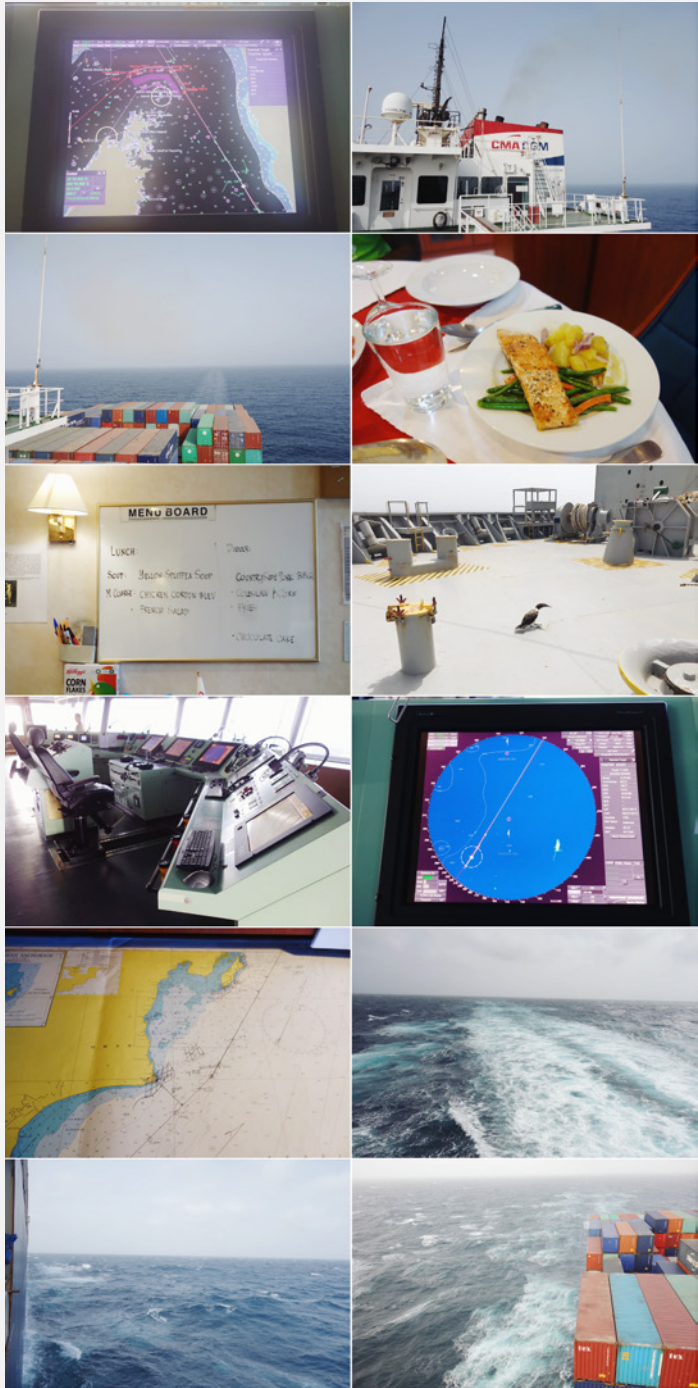
The final result with grilled fish and an overall enjoyable dinner onboard.



Engine room and passenger Piccinino from Malta talking to chief engineer.



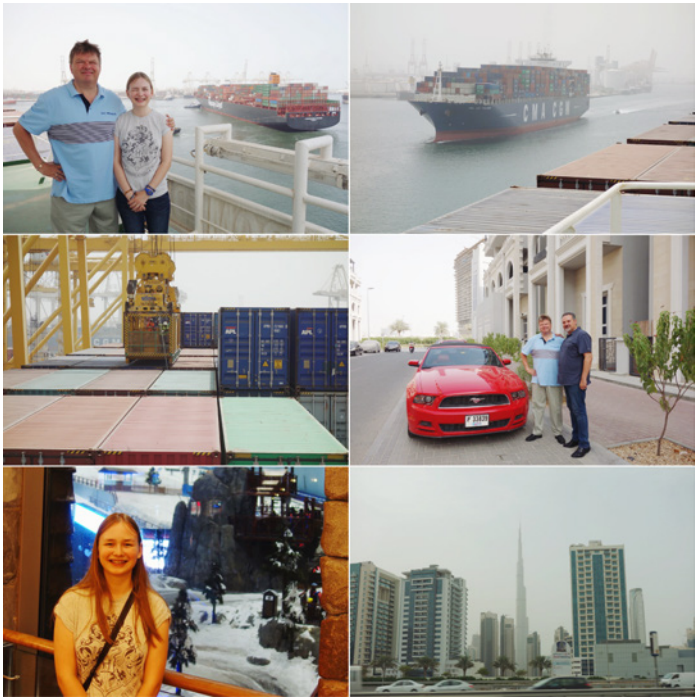
A visit to the engine room an incredibly powerful ships engine at some 100,000 horsepower.



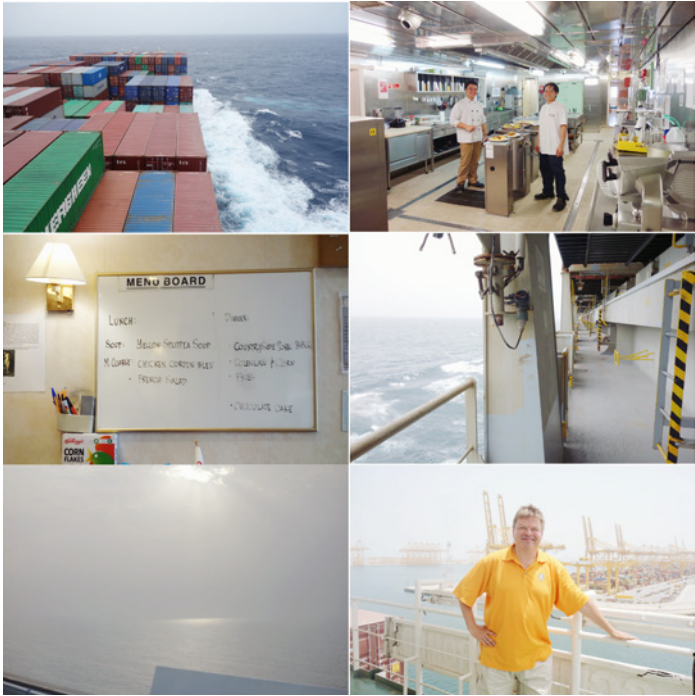
Close to Jebel Ali, view from bridge wing, view in the Red Sea facing aft, salmon dinner, the day's menu, a visitor onboard near Oman, a view of the bridge, a navigation system on the bridge, a map used for navigation on the bridge and several photos of the ocean as we sailed along.







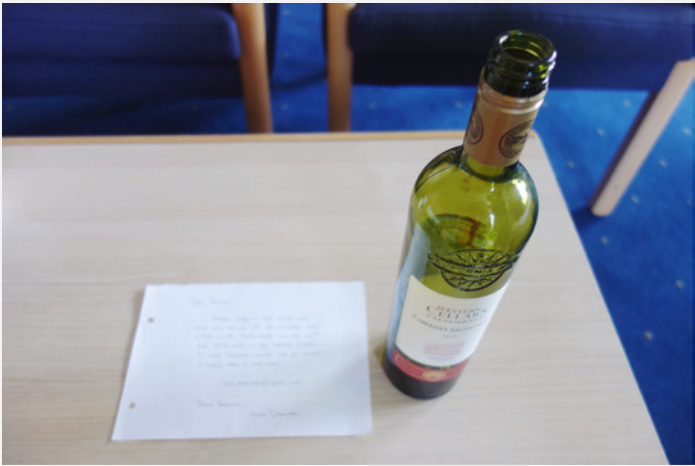
Me with daughter outside her cabin, meeting another CMA CGM vessel, work starting immediately on arrival, when in Jebel Ali I met local contact Mr. Ghassan of Gamma5 Logistics. My daughter in the Dubai mall in front of the indoor ski slope and a view of the Burj Khalifa – the worlds tallest building.



Forward view, galley with chief cook and steward from the Philippines, today's menu and the deck "walkway" where I took 6 rounds (equal to 6km) daily, the sunset in immense heat close Jebel Ali and me outside in the 47c weather leaving Jebel Ali.



Passenger on deck shows scale/size of the deck onboard, steaming ahead and view from deck.



Preparing a bottle post to be sent out from the ship – hope someone receives!



Dinner onboard in the Indian Ocean – Donuts for dessert.



The horizon close to Port Kelang







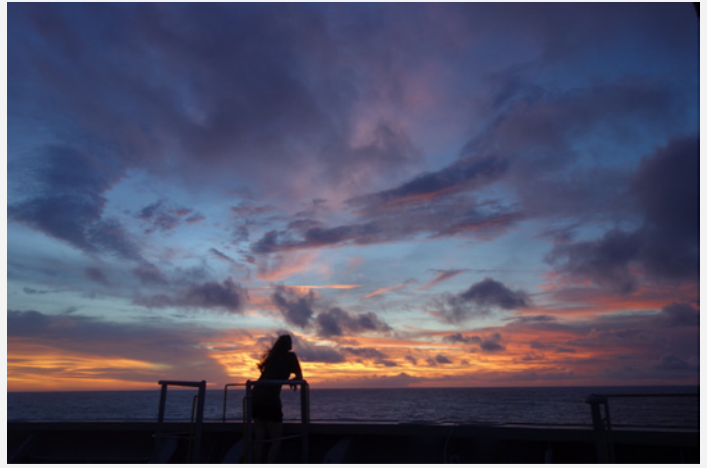
Meeting at Westport Kelang office with Mr. Dennis Tan (of Tera Projects), Bo Drewsen, Mr. Kumar Manager of PKL office of CMA CGM and his colleagues.



mv CMA CGM Andromeda alongside in Westport Kelang, on the wing leaving Westport, Sailing in the Indian Ocean towards Straits of Malacca, Malaysia, container operations, 5km quay with STS cranes.



Meeting with CMA CGM OOG Desk Manager and Sales Manager at the Port of Yantian, China.



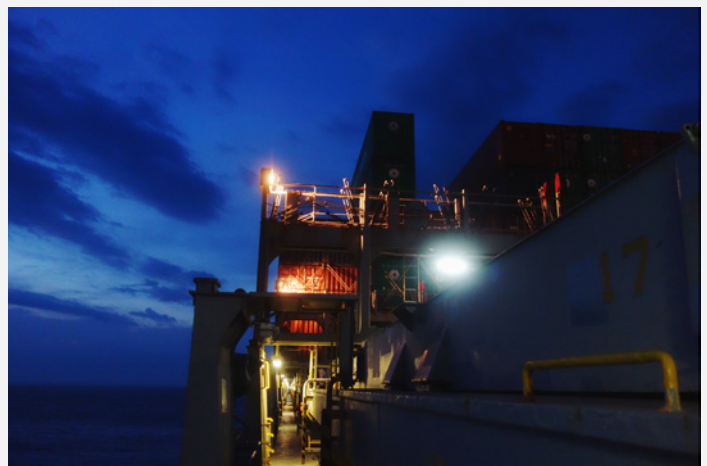
My daughter on the bow of the ship almost like in the movie The Titanic. Near the entrance to Taiwan strait before a typhoon. arrived.



Sunsets are spectacular on the open sea.



More beautiful sunsets.

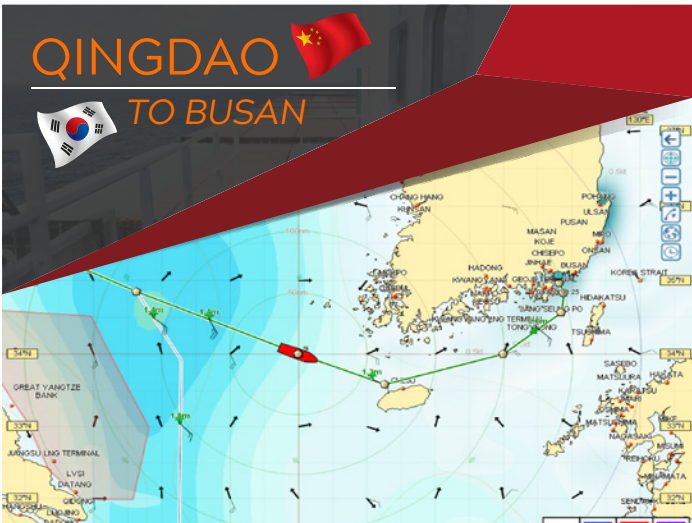


Evening view in Yantian port – working 24-7





Between Yantian and Qingdao one night, we experienced winds of some 50 knots (see lower right) and 4-5m high waves with subsequent rolling and pitching.



View of passengers recreation room.



Amenities in the passenger recreation room.



Relaxation onboard - sitting on my balcony digesting one of the 20 books I brought with wonderful views and temperatures.



Wonderful 29sqm cabin onboard at F deck just below the bridge with forward and side views.

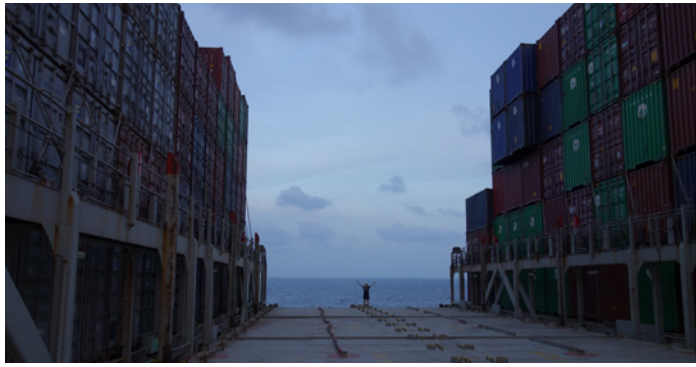


Wonderful 29sqm cabin onboard at F deck just below the bridge with forward and side views.



View from side window in my cabin on F-deck.

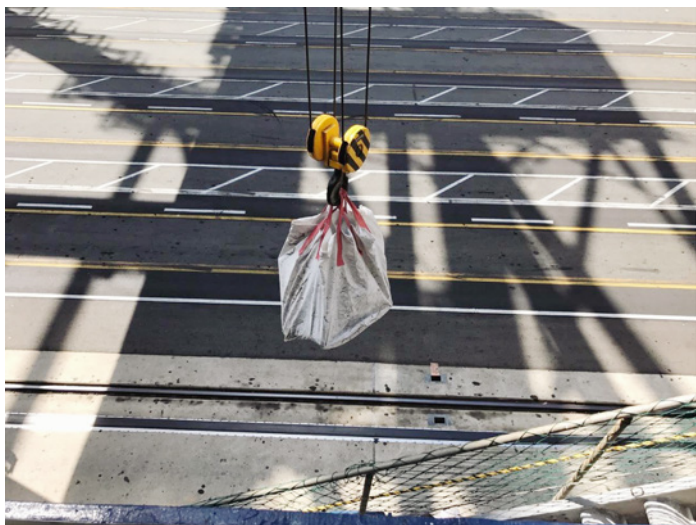




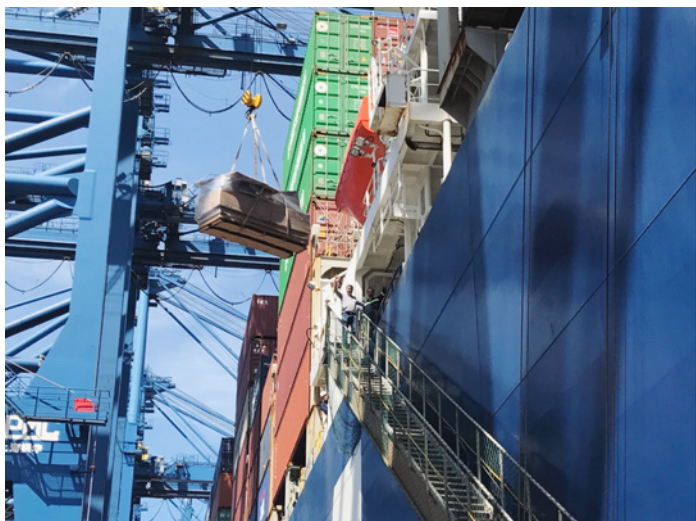
Showing the scale of the ship - my daughter on an empty deck.



Positioning of empty flatracks between Asian ports.



Luggage being lifted at Busan Port.



End of the trip in Busan, luggage being lifted off and a goodbye from the captain onboard.

Global Readers In-Depth Interviews Neutral Coverage

"Your weekly publication is unique and one can recognize your personal commercial shipping background which makes it positively different from others and thus very revealing and valuable."

Joachim Jark - Alliance Maritime

**PROJECT CARGO**  
Weekly

## AD PRICING

**1x** Main Banner  
870 USD / 800 EUR per week

**3x** Sectional Banner  
550 USD / 500 EUR per week

 Video  
440 USD / 400 EUR per week

 Job Listings  
220 USD / 200 EUR per month per job

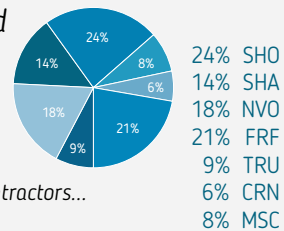
## READERSHIP

### • Subscribers

We have 27,000 subscribers who regularly open the newsletter

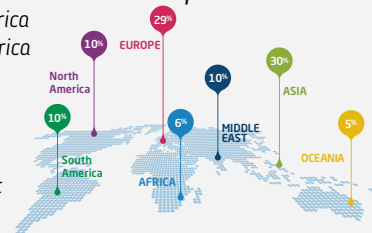
### • Industries Covered

Shipowners,  
Shipping Agents,  
NVOCC's,  
Freight Forwarders,  
Trucking,  
Rigging and Lifting Contractors...



### • Geographical Distribution of Subscribers

10% North America  
10% South America  
30% Asia  
29% Europe  
6% Africa  
5% Oceania  
10% Middle East



## Get in touch

For editorial contributions contact:  
[editorial@projectcargo-weekly.com](mailto:editorial@projectcargo-weekly.com)

For advertising and sales inquiries contact:  
[advertising@projectcargo-weekly.com](mailto:advertising@projectcargo-weekly.com)

[www.projectcargo-weekly.com](http://www.projectcargo-weekly.com)